

The drawing illustrates a cross-section of a basement wall and floor. The wall on the left is labeled 'Zidarie neportanta - 25 [cm]' and 'Perete existent'. The floor is shown with 'Fundatie existenta' and 'Subzidire fundatie existenta'. The proposed construction layers for the floor are detailed on the right, including 'Stratificatie conform arhitectura: 11 [cm]', 'Placa din beton armat: 20 [cm]', 'Polistiren extrudat: 10 [cm]', 'Hidroizolatie orizontala membrana termosudabila, elastomerica', 'Beton de egalizare: 5 [cm]', and 'Folie polietilena'. The wall construction includes 'Umplutura din pamant argilos stabilizat compactat D>98%'. The drawing also shows 'Conform armare centuri peste subsol' and 'Conform armare placa peste subsol'. Dimensions and elevations are provided throughout the drawing, with elevations ranging from -3.00 to -0.11. The drawing is divided into two sections, 22 and 23, indicated by red dashed lines.

Dimensions (cm):

- Top horizontal dimensions: 62, 10, 25, 39, 15
- Top horizontal dimensions (below): 50, 10, 25, 24, 30
- Bottom horizontal dimensions: 130, 10, 15, 20, 10, 30
- Right vertical dimensions: 15, 11, 11, 224, 239, 40, 55

Elevations (m):

- ±0.00
- 0.11
- 0.26
- 2.40
- 2.50
- 3.00
- 2.50
- 2.90
- 3.00

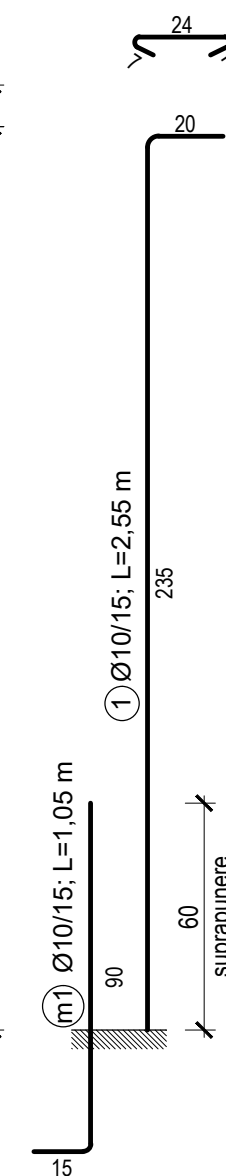
Labels and Notes:

- Zidarie neportanta - 25 [cm]
- Perete existent
- Fundatie existenta
- Subzidire fundatie existenta
- Stratificatie conform arhitectura: 11 [cm]
- Placa din beton armat: 20 [cm]
- Polistiren extrudat: 10 [cm]
- Hidroizolatie orizontala membrana termosudabila, elastomerica
- Beton de egalizare: 5 [cm]
- Folie polietilena
- Umplutura din pamant argilos stabilizat compactat D>98%
- Conform armare centuri peste subsol
- Conform armare placa peste subsol
- Rost de turnare
- Diafragma b.a. - 30 [cm]
- Hidroizolatie verticala
- Termoizolatie polistiren extrudat - 10 [cm]
- Membrana de protectie Tefond
- Element agrementat pentru etanseizarea rostului de turnare (profil sau banda)
- Rost de turnare
- Conform armare radier general
- C25/30
- Radier general: 40 [cm]
- Beton de protectie hidroizolatie: 5 [cm]
- Hidroizolatie orizontala membrana termosudabila, elastomerica
- Beton de egalizare: 5 [cm]
- Folie polietilena
- Teren natural compactat

Section Markers:

- 22
- 23

(a)
Agrafe. Ø6-4 buc./mp
B500; L=0,40 m
(cu dispunere in sah)



Technical drawing of a reinforced concrete slab (Suprapunere) showing dimensions and reinforcement details.

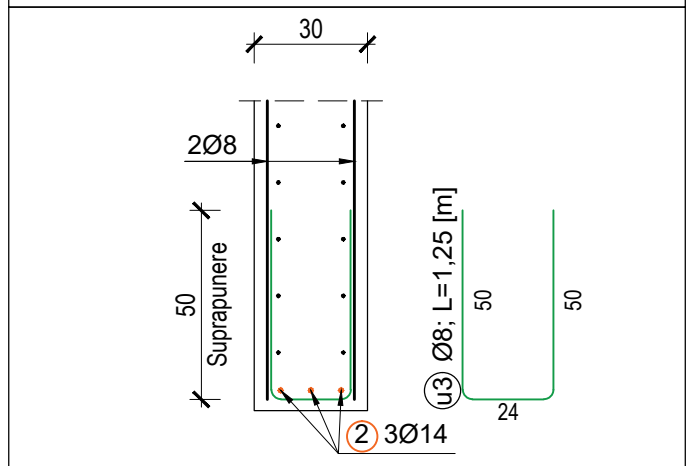
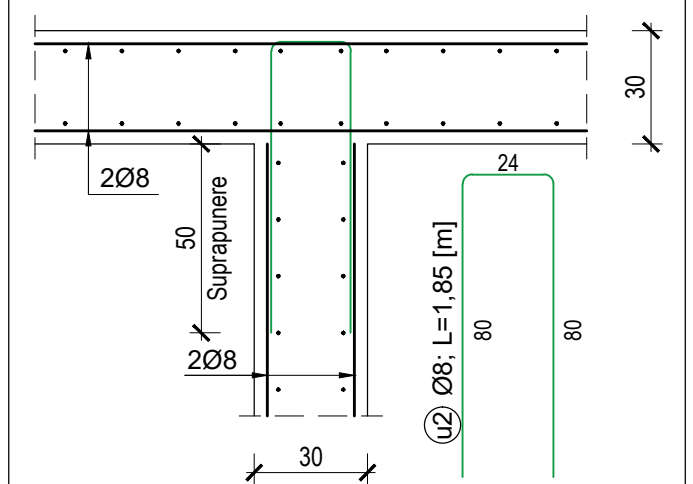
Dimensions:

- Width: 50
- Length: 30
- Thickness: 30

Reinforcement Details:


- Top reinforcement: $\varnothing 8$; $L = 2,05$ [m]
- Bottom reinforcement: $\varnothing 8$; $L = 2,05$ [m]

The drawing includes a plan view and a cross-section view. The plan view shows a rectangular slab with a width of 50 and a length of 30. The cross-section view shows a slab with a thickness of 30 and a width of 50. The reinforcement details include a top reinforcement bar ($\varnothing 8$) and a bottom reinforcement bar ($\varnothing 8$). The slab is labeled "Suprapunere".



The image contains three technical drawings of pipe fittings, each with its own set of dimensions and labels.

- Left Drawing (U-bend):** Shows a U-shaped pipe fitting. Dimensions include:
 - Outer radius: $40 \cdot \varnothing \leq 16$ [mm]
 - Inner radius: $70 \cdot \varnothing \geq 16$ [mm]
 - Thickness: \varnothing
 - Overall width: COTA PLANSA
- Middle Drawing (150° Elbow):** Shows a pipe fitting bent at an angle of $\alpha \geq 150^\circ$. Dimensions include:
 - Outer radius: $25 \varnothing$
 - Inner radius: ≥ 10 [mm]
 - Outer radius detail: $40 \cdot \varnothing \leq 16$ [mm]
 - Inner radius detail: $70 \cdot \varnothing \geq 16$ [mm]
 - Thickness: \varnothing
 - Overall height: COTA PLANSA
- Right Drawing (90° Elbow):** Shows a pipe fitting bent at an angle of $90^\circ \leq \alpha \leq 150^\circ$. Dimensions include:
 - Outer radius: $\geq 10 \varnothing$
 - Inner radius: ≥ 70 [mm]
 - Outer radius detail: $40 \cdot \varnothing \leq 16$ [mm]
 - Inner radius detail: $70 \cdot \varnothing \geq 16$ [mm]
 - Thickness: \varnothing
 - Overall height: COTA PLANSA

| DATA | INDEX REVIZIE | DETALII REVIZUIE | DESCRIERE |
|-----------------------|---|----------------------|---|
| | | | |
| | | A1 | |
| Verificator/Expert | Nume | Semnatura | Cerinta |
| | | | Referat nr. / Experiza nr. / Data |
| Proiectant general | TRIM BUILD S.R.L. Bd. Braila, nr. 15 et.3-4, ap.13, mun. Focsani, jud. Vrancea tel.: 0743 653 043; e-mail: office@samuelstud.ro | | Titlu proiect: CONSOLIDARE, REABILITARE, MODERNIZARE SI DOTARE C2 DIN ACADEMIA DE POLITIE "ALEXANDRU IOAN CUZA" Obiect: Corp de cladire intre axele 23→25* Amplasament: Aleea Privighetilor, nr. 1A, Sector 1, Bucuresti |
| Proiectant rezidentia |  METRIC STRUCTURE S.R.L. C.U.I. 48680633, J12/176/2022 punct de lucru: str. Traian, nr. 41, Cluj-Napoca | | Faza: D.T.A.C. Proiect nr.: 36/2024 |
| Sef proiect | arh. Samuel Stefan | Scara 1:20 | Investitor: ACADEMIA DE POLITIE "ALEXANDRU IOAN CUZA" Aleea Privighetilor, nr.1A, Sector 1, Bucuresti |
| Proiectat | ing. Danut Nasui | Data 11. 2024 | Titlu plansa: Detaliu fundatie (Sectiunea 1-1) |
| Proiectat | ing. Truta Raluca | | Rev. 0 |

Document creat de **METRIC STRUCTURE S.R.L.**, nici o parte din acest document nu poate fi copiată, modificată sau multiplicată fara acordul firmei.

- C25/30 (radier general, diafragme)
 - clasa de expunere: XC2
 - clasa de consistență: S3
 - dimensiunea max. a granulei agregatelor: $D_{max} = 16 \text{ [mm]}$

- C12/15 (beton de egalizare)
 - clasa de expunere: X0
 - clasa de consistență: S3
 - dimensiunea max. a granulei agregatelor: $D_{max} = 16 \text{ [mm]}$

- B 500 (clasa de ductilitate C)

- 5,0 [cm] - radier general
- 3,0 [cm] - diafragme